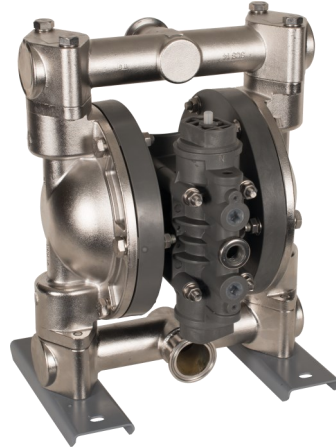
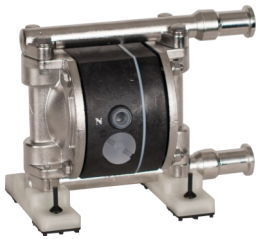


FDA Compliant Pumps

Yamada FDA Compliant Pumps were specifically designed for Food Ingredients, Pharmaceutical & Cosmetic processors where 3A or USDA Standards are not required.

FDA



FEATURES:

- 316 stainless steel housings - electropolished passivated satin finish
- FDA compliant parts
- Sanitary clamp fittings
- Handles a wide variety of fluids with high solids content or viscosity
- Self priming
- Ability to run dry without damage
- Portable
- No mechanical seals, couplings or motors
- Variable flow rate

Outside accessible non-stalling air valve includes a non-centering, spring assisted shuttle, ensuring a positive shift every time.



Applications

Food Ingredients
 Winery
 Brewery
 Distilleries
 CBD Oil
 Sanitizing Chemicals
 Cosmetics
 Pharmaceutical
 And many more...

FDA Compliant Pumps

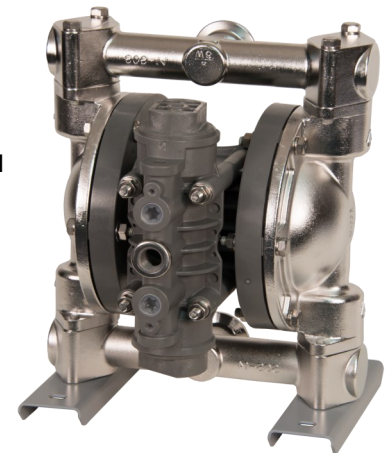
PUMP MODEL	SANITARY FITTING SIZE	DIAPHRAGM	NET WEIGHT	MAXIMUM LIQUID TEMP	MAXIMUM SOLID SIZE
NDP-5FST-FDA	3/4"	PTFE	6.6 Lbs.	212°F	N/A
DP-10BSH-FDA	3/4"	Hytrel®	14.3 Lbs.	248°F	<1/32"
DP-10BST-FDA	3/4"	PTFE	14.3 Lbs.	212°F	<1/32"
NDP-15BSH-FDA	1"	Hytrel®	14.5 Lbs.	248°F	<1/32"
NDP-15BST-FDA	1"	PTFE	14.5 Lbs.	212°F	<1/32"
NDP-20BSH-FDA	1"	Hytrel®	33.1 Lbs.	248°F	<1/16"
NDP-20BSE-FDA	1"	EPDM	33.1 Lbs.	180°F	<1/16"
NDP-20BST-FDA	1"	PTFE	33.1 Lbs.	212°F	<1/16"
NDP-25BSH-FDA	1-1/2"	Hytrel®	50.7 Lbs.	248°F	<3/16"
NDP-25BSE-FDA	1-1/2"	EPDM	50.7 Lbs.	180°F	<3/16"
NDP-25BST-FDA	1-1/2"	PTFE	50.7 Lbs.	212°F	<3/16"
NDP-40BSH-FDA	2"	Hytrel®	114.5 Lbs.	248°F	<9/32"
NDP-40BSE-FDA	2"	EPDM	114.5 Lbs.	180°F	<9/32"
NDP-40BST-FDA	2"	PTFE	114.5 Lbs.	212°F	<9/32"
NDP-50BSH-FDA	2-1/2"	Hytrel®	132 Lbs.	248°F	<5/16"
NDP-50BSE-FDA	2-1/2"	EPDM	132 Lbs.	180°F	<5/16"
NDP-50BST-FDA	2-1/2"	PTFE	132 Lbs.	212°F	<5/16"
NDP-80BSH-FDA	4"	Hytrel®	246 Lbs.	248°F	<13/32"
NDP-80BSE-FDA	4"	EPDM	246 Lbs.	180°F	<13/32"
NDP-80BST-FDA	4"	PTFE	246 Lbs.	212°F	<13/32"

Note: All FDA pumps include 316SS electropolished passivated satin finished housings, PTFE check valves (other options available), grey PTFE coated air motor, plastic for NDP-5/15/20/25 and capped sanitary center disks. Air supply pressure is 20 to 100 for all models. Ultimate diaphragms are FDA complaint.

Additional Option:

10RA to 20RA Interior Mechanical polish available for some models, consult Yamada.

For performance curves, BOM, CAD, and data sheets, visit our website at yamadapump.com.



NDP-20BST-FDA



Hytrel® is a registered trademark of DuPont Dow Elastomers.

Label:



Toll Free: 800-990-7867
www.yamadapump.com

Form: FD0122

